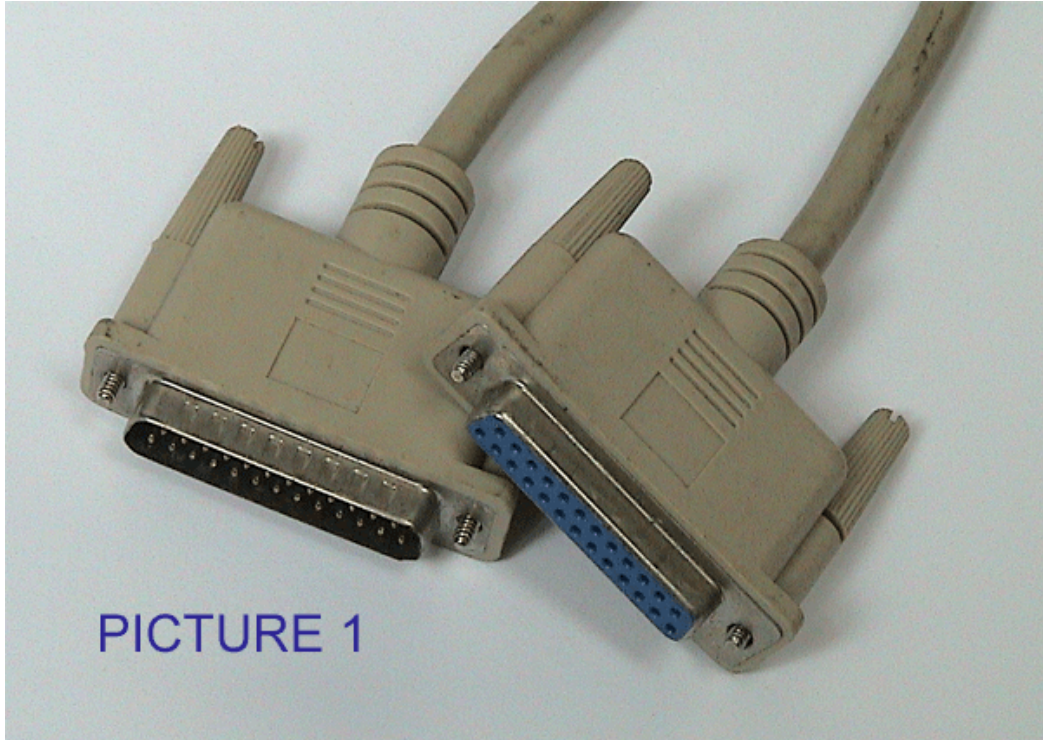


# ALADDIN FAMILY PROGRAMMER USER GUIDE

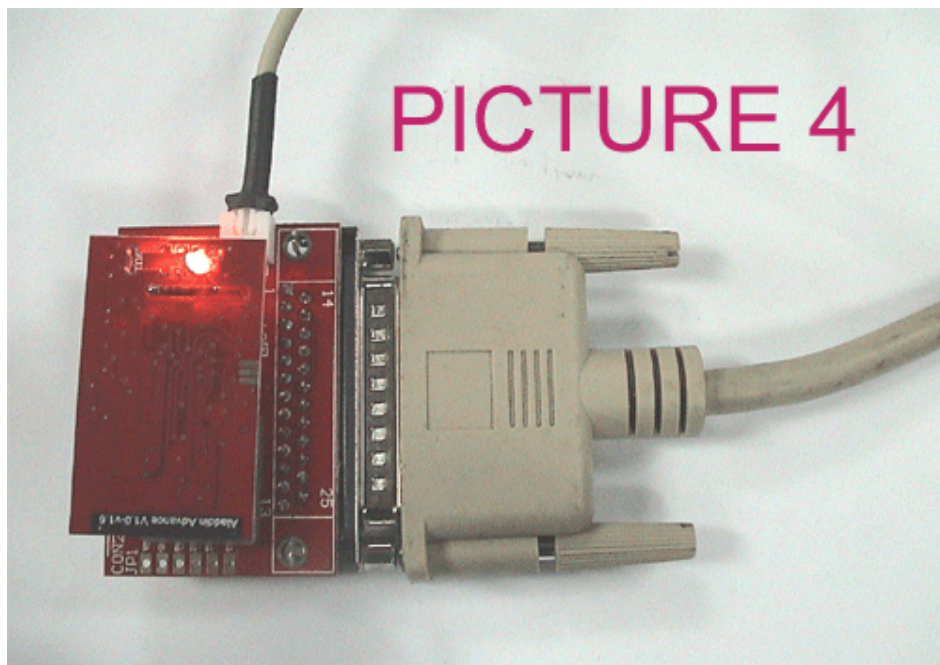
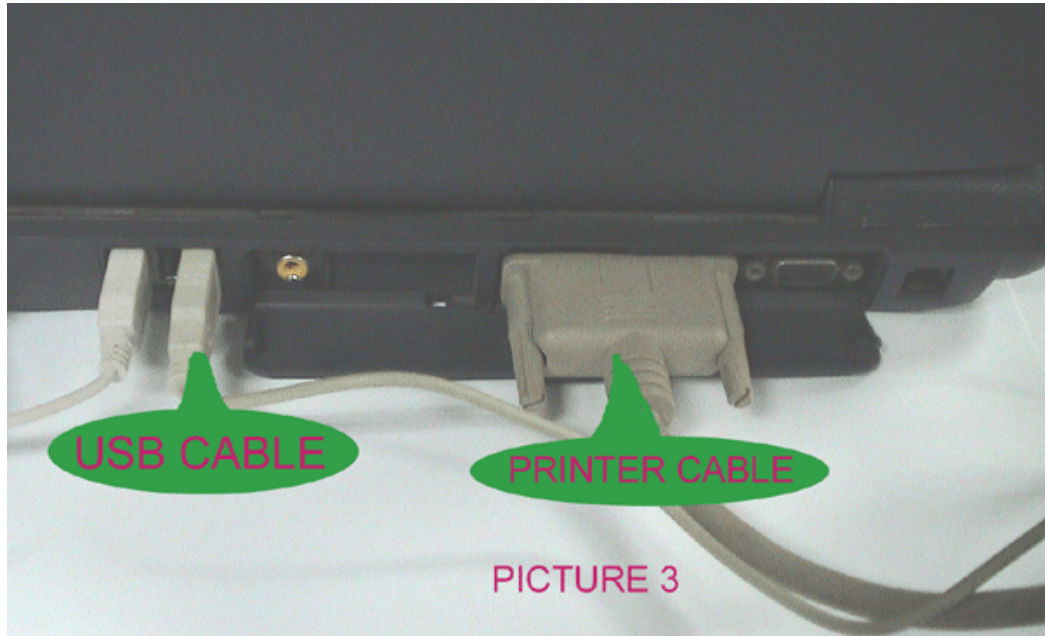
- Copyright declare: this tools are only for home use, and please don't download any bios file which is against the copyright, We are not responsible for anything about that.
- Our product only comes with aUSB link cable and the programmer, but you need the another printer cable( buy yourself, picture 1) and the software (get it from your supplier)



- 
- The software folder has total 4 files and one sub folder like picture 2:

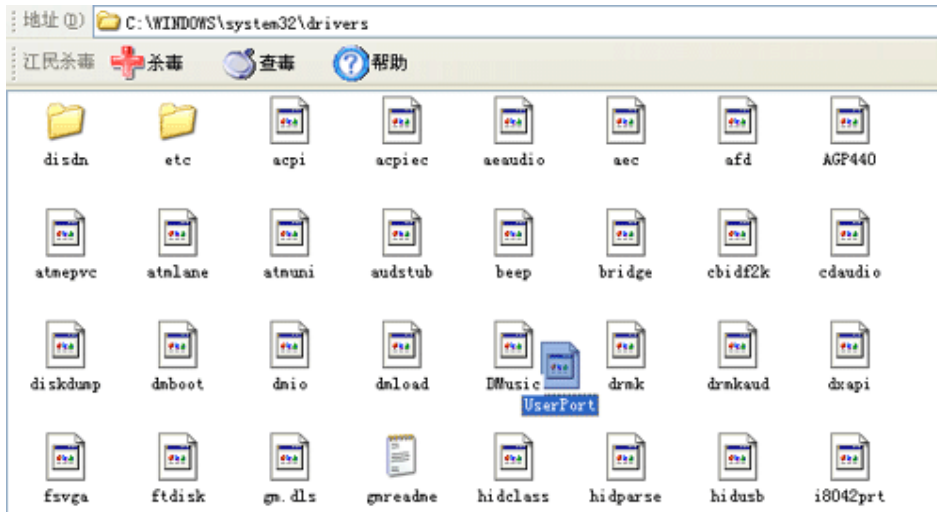



- 
- Please link the programmer and the computer with the 2 cables like the picture 3 and picture 4:

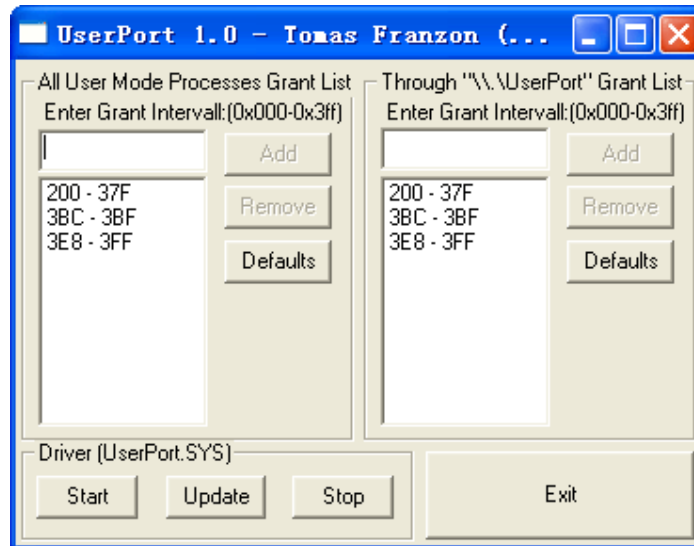


- 
- How to use the software:

1. Copy the UserPort system file  5 KB to C:\WINDOWS\system32\drivers like the picture 5 below:




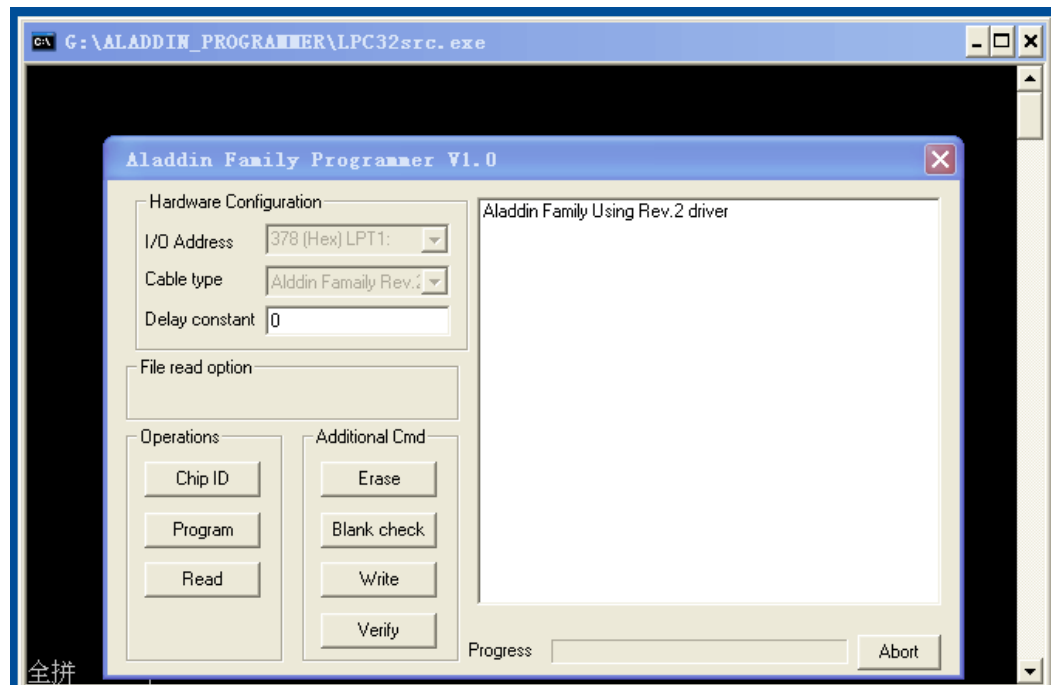
- Then execute the userport.exe (double-click the icon ) then a new dialog windows will displayed ( like picture 6) then press the “start” button to start the print port, and after that click the “exit” close this window.



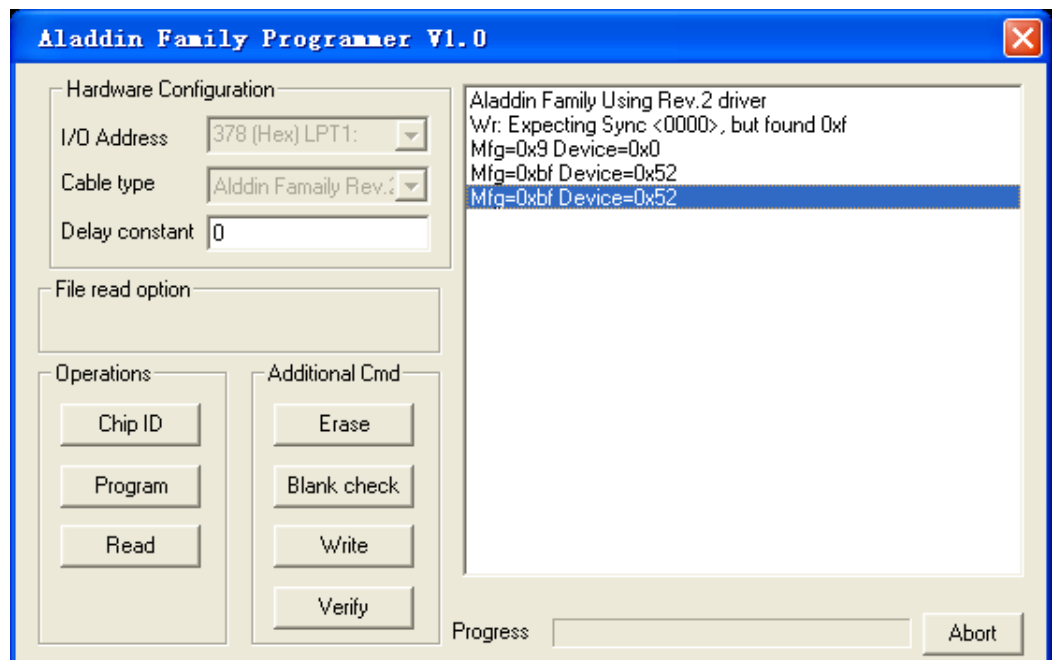
- After you have started the print port , you now can open the LPC32src.exe for download the bios file from the computer to your Aladdin xt or super Aladdin



live,(include the 49LF020 and 49LF020A) double-click the icon  and then the new dialog windows appeared like picture 7:

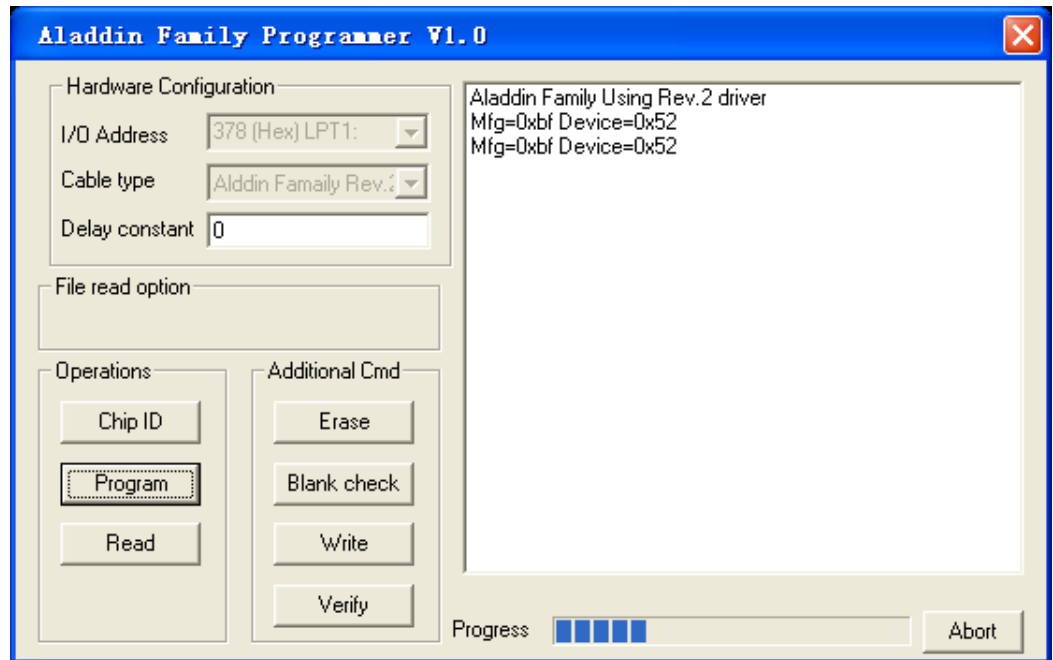


4. Click the “Chip ID” button to check if you have connected the Aladdin xt or super Aladdin live well with programmer, if your chip are 49LF020A ,then the text window will show the IC details: “Mfg=0xbf Device=0x52” (see picture 8) if the display is correct, then execute step 5.

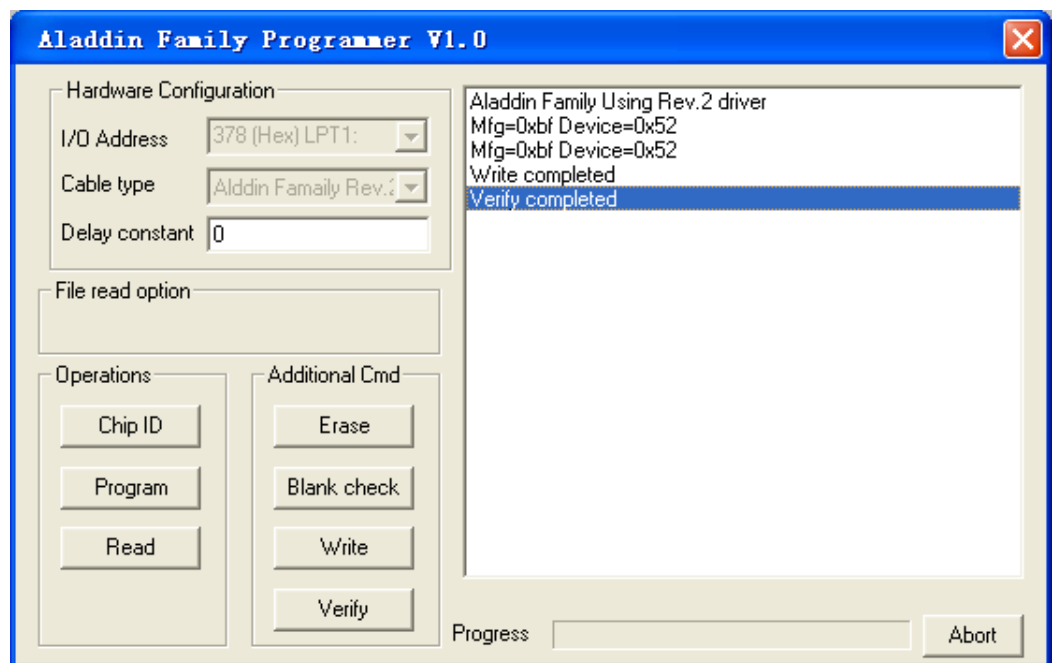


5. Click the “program” button and choose what bios file you need to burn into the Aladdin chip, then press the “open” button, then the programmer will download the bios file into the Aladdin hip automatically, and the progress status also will be showed, but please

don't press the "Abort" button if you don't want stop it. You should wait 2-3 minute (see picture 9)



6. The software will verify the chip with the buffer automatically after programmed, if there is no error appeared, so it is completely successful.! (see picture 10)



Trouble shooting:

If your you can not start the print port ,please check if have done step 1.

If the text window shows : “Wr. Expecting Sync<0000>,but found 0xf” during the period of the programming, it means there has the connection problems between the Aladdin and the programmer or the chip is not stable ( damaged already) , please try it again from the step1.

Thanks for choosing our tools, hope you enjoy it.